

# V2

New heights in reliability and simplicity



# 1.

## PRESENTATION

The Trimos V2 height gauge embodies Swiss precision, durability, and simplicity. Designed for professionals worldwide, it ensures accurate and easy measurements.

### Effortless Simplicity

The V2's user-friendly interface provides quick access to essential measurements, ensuring efficiency and accuracy.

### Built for Durability

Engineered to Swiss standards, it withstands tough conditions, making it a reliable tool for any task.

### Uncompromising Quality

As a Trimos product, the V2 merges traditional craftsmanship with modern technology, guaranteeing superior performance.

### Intuitive and Smart Features

The intuitive interface streamlines navigation, while Smart Reverse simplifies diameter measurements with precision and ease.

### Seamless Connectivity

USB and RS232 ports enable easy data sharing.

### Warranty and Maintenance

Backed by a two-year warranty, extendable to four years, the V2 is designed for longevity with straightforward maintenance.

### Versatile Measuring Ranges

Available in 400 mm and 700 mm to suit varied applications.

### Reliable Support

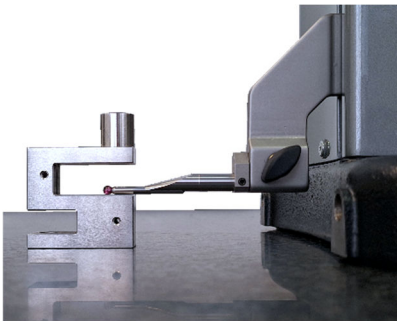
Trimos' dedicated team ensures you maximize the V2's potential from the start.

More than a measurement tool, the V2 is a dependable ally that meets the highest professional standards.



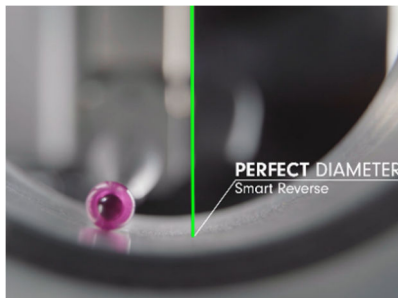
# 2.

## KEY FEATURES



### Accurate Height Measurements

Ensures reliable height and distance measurements.



### SMART REVERSE

Simplifies the diameter measurements process.



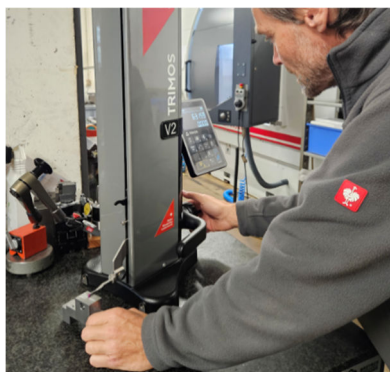
### Intuitive Interface

Seamless navigation and straightforward functionality



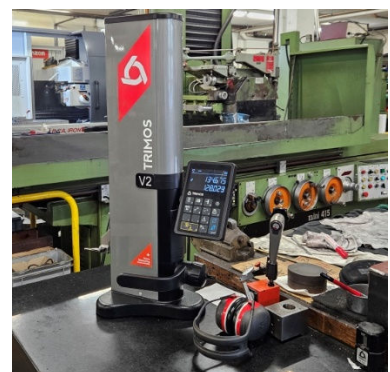
### Direct Function Access

Enhances efficiency in the measurement workflow.



### Ergonomic Design

Ensures comfortable and effective operation, with manual movement.



### Effortless Upkeep

Designed to last in tough workshop environments.



### Two-Year Standard Warranty

Extendable up to an additional two years = 4 years!



	A	B	C
1			
2		40.002	
3		120.003	
4			

### Advanced Connectivity

Facilitates easy data sharing with USB and RS232 ports, enhancing workflow integration.



### Swiss-Made Quality

Combines cutting-edge technology with unparalleled craftsmanship.

## 3.

## TECHNICAL DATA

V2		400	700
Measuring range	mm (in)	406 (16)	710 (28)
Max. permissible errors, $B_{MPE}$	$\mu m$	8	8
Repeatability, $R_{MPE}$	$\mu m$	3 ( $\varnothing$ : 5)	
Max. resolution	mm (in)	0.001 (0.00005)	
Measuring force (adjustable electronically)	N	0.75 ÷ 1.5	
Data output		USB / RS232	
Protection grade of measuring system (CEI 60529)		IP67	
Weight	kg	21	24
Max. manual displacement speed	mm/s	1000	
Operational temperature	°C	+10 ÷ +40	
Relative humidity (operation and storage)	HR	5 ÷ 75 % (without condensation)	

The above values were determined in accordance with ISO 13225 using the TA-MI-101 insert.  
 $R_{MPE}$  is defined as 2 times the standard deviation (2s) over a series of 20 height measurements.

## 4.

## MODELS &amp; REFERENCES

V2	
Measuring range 400 mm	V2-400
Measuring range 700 mm	V2-700

## 5.

## DELIVERY

V2	
Instrument according to specifications	Measuring insert with ruby ball $\varnothing 4$ mm
Power supply	Setting gauge 4 mm
Calibration certificate	User's manual

